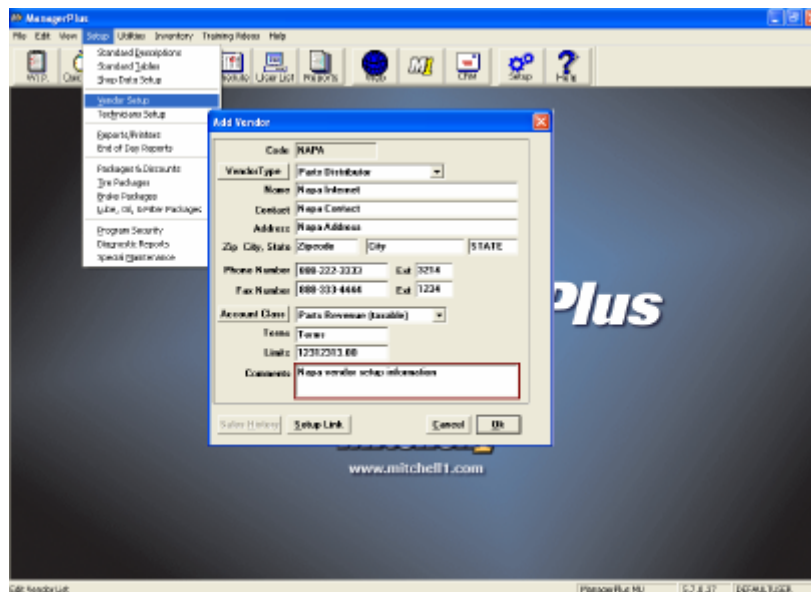


OnDemand5 Manager/ManagerPlus Version 5.7

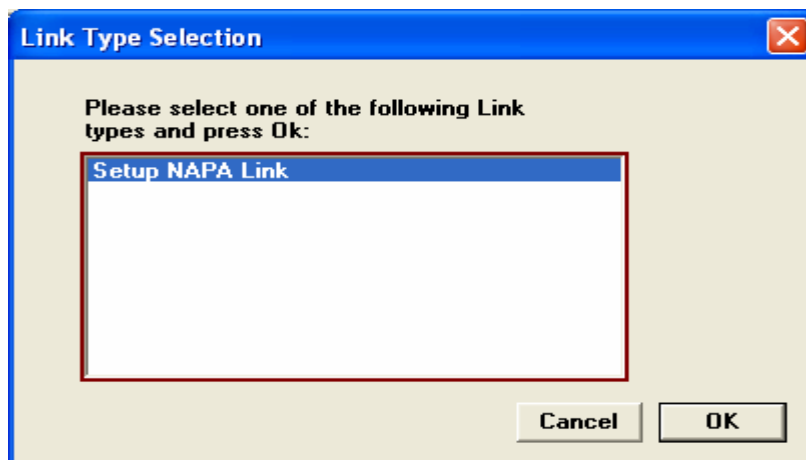
NAPA eProcurement and DialUp Access Vendor Setup

Note: You must have Manager/ManagerPlus version 5.7 and NAPA Catalog installed on your computer before proceeding to the following instructions.

1. Open Manager/MangerPlus Program
2. Select **Vendor Setup** option from the **Setup** menu.
3. Click **Add** button and enter your vendor information.



4. Click **Setup Link** button. The Link Type Selection dialog will display.



5. Select **Setup NAPA Link** and click **OK** button. The NAPA Store Setup dialog will display.

The screenshot shows the 'NAPA Store Setup' dialog box. Under 'Vendor Information', the Code is 'NAPA' and the Vendor Name is 'Napa Internet'. Under 'Vendor Provided Information', the 'Internet Connection (eProcurement)' radio button is selected. The Store ID field contains '700001995' and the TAMS Customer ID field contains 'D01000TEST'. The 'Modem Connection (Access)' radio button is unselected. The Phone Number, TAMS Customer ID, and Modem Selection (U.S. Robotics 56K FAX EXT) fields are empty. At the bottom are 'Delete', 'Save', and 'Cancel' buttons.

NAPA eProcurement setup

The screenshot shows the 'NAPA Store Setup' dialog box. Under 'Vendor Information', the Code is 'NAPADIAL' and the Vendor Name is 'Napa DialUp'. Under 'Vendor Provided Information', the 'Modem Connection (Access)' radio button is selected. The Store ID and TAMS Customer ID fields are empty. The Phone Number field contains '9,1678-556-2130' and the TAMS Customer ID field contains 'D01000TEST'. The Modem Selection dropdown menu is set to 'U.S. Robotics 56K FAX EXT'. At the bottom are 'Delete', 'Save', and 'Cancel' buttons.

NAPA Dial-Up setup

6. Choose your options for accessing NAPA: **Internet Connection (eProcurement)** for setup an eProcurement link or **Modem Connection (Access)** for setup a Dial-Up connection. Enter your vendor credentials (Store ID, & TAMS Customer ID, if you choose modem connection, then you also need to select your modem). Click **Save** button to save your vendor information. You will be returned to the Add Vendor dialog.
7. Click **OK** button to save the NAPA eProcurement or Dial-Up vendor Link that you created. Now you will be returned to the Vendor Setup dialog.
8. Click **OK** button again to complete your NAPA vendor setup.

Now you are ready to access NAPA catalog directly from Manager/ManagerPlus program to transfer parts from NAPA catalog. You can now price check and order parts through your NAPA eProcurement link.

Should you need assistance setting up the NAPA eProcurement link, please contact either:

Mitchell Support - 888-724-6742
Snap-on Support - 800-944-3877

Direct access to NAPA catalog from Manager/ManagerPlus

ManagerPlus

LastName, FirstName 2000 Honda Accord LX

Customer Vehicle Order Revision History Repair Order # 000003

Written By (name) Hot # Order In 53240 Prev Order 0

Positioned 5:00 PM 02/24/2005 Ref # Source E

Time	Rate	Description	Qty	Extended	Sale	Price	List	Part	MfgCode	Tech Name	Cost	Est. Parts
0.00		BRK CALIPER	1.00	84.26	84.26	84.26	72.86	19-2	A1	Please Select,	42.13	0.00
0.00		BRK CALIPER <CORE>	1.00	35.00	35.00	0.00	35.00	19-2	A1	Please Select,	35.00	0.00
0.00		BRK CALIPER	1.00	84.26	84.26	84.26	72.86	19-2	A1	Please Select,	42.13	0.00
0.00		BRK CALIPER <CORE>	1.00	35.00	35.00	0.00	35.00	19-2	A1	Please Select,	35.00	0.00
0.00		Remanufactured Starter w	1.00	340.22	340.22	340.22	260.79	27	DNT	Please Select,	170.11	0.00
0.00		Remanufactured Starter w	1.00	80.00	80.00	80.00	40.00	27	DNT	Please Select,	40.00	0.00
0.00		Remanufactured Starter w	1.00	164.24	164.24	164.24	253.00	27	UST	Please Select,	82.12	0.00
0.00		Remanufactured Starter w	1.00	100.00	100.00	100.00	50.00	27	UST	Please Select,	50.00	0.00
0.00				0.00	0.00	0.00					0.00	0.00

Invoice Parts Labor Sub Total Haz Mat. Supplies Tax Total

Estimate 922.98 0.00 922.98 0.00 5.00 76.56 1004.54

Convert to Invoice Parts Ordering Options Detail Fax Print Exit

Ready ManagerPlus MU 5.7.0.37 DEFAULTUSER

ManagerPlus

LastName, FirstName 2000 Honda Accord LX

Customer Vehicle Order Revision History Repair Order # 000003

Written By Napa Parts Catalog and Ordering 5.00.

Positioned

NAPA Parts Viewer

Part No. Description Price Line Cat

0692315	Brake Drum-Frear Comment: Gas/Fuel Injected Selen With Ovens Brakes Related Parts: WATERLESS HAND CLEANER, BRAKE LINES, QUIET BRAKE, GREASE G-DAG	\$69.62	EA
4401626	Brake Drum-Frear Related Parts: WATERLESS HAND CLEANER, BRAKE LINES, QUIET BRAKE, GREASE G-DAG	\$63.62	TS
6401626	Brake Drum-Frear Related Parts: WATERLESS HAND CLEANER, BRAKE LINES, QUIET BRAKE, GREASE G-DAG	\$60.25	UP

Cost Est. Parts

42.13	0.00
35.00	0.00
42.13	0.00
35.00	0.00
170.11	0.00
40.00	0.00
82.12	0.00
50.00	0.00
0.00	0.00

2000 Honda Accord 0 Items Total \$0.00

Cancel Transfer

Ready ManagerPlus MU 5.7.0.37 DEFAULTUSER